

SNOW DEFENDER™

Patent Pending

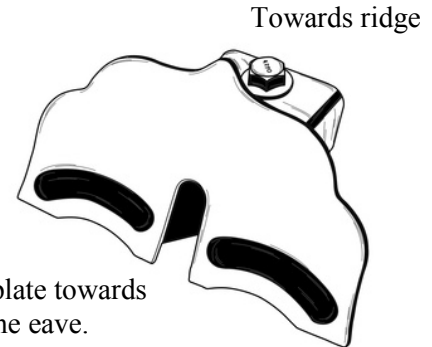
55RF

Installation Instructions

The Snow Defender™ 55RF is designed to fit vertical-folded seam profiles for S-5!™ clamps (sold separately). It is available in many different powder coated colors.

Step 1: Fasten clamp per the clamp manufacturer instructions for proper torque. It is recommended to install the guards in a staggered pattern. *(Levi's Building Components is not responsible for any clamp failures).*

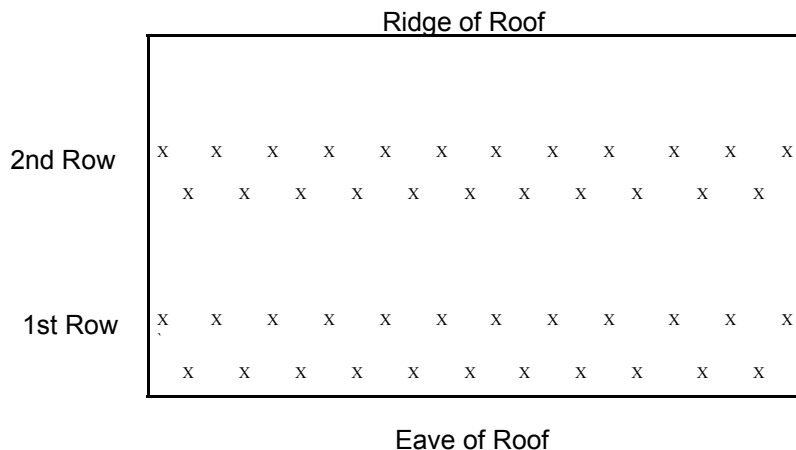
Step 2: Fasten the 55RF to the clamp using the clamp manufacturer's bolt. 55RF is to be fastened using the hole in the clamp towards the ridge. Be sure to secure the bolt very tightly. The face plate is to be towards the eave.



Face plate towards the eave.

Contact Levi's Inside Sales Department by calling (877) - 897-7020 for additional placement information.

Placement Example:



For warranty details visit www.snow-defender.com



137 Newport Rd
Leola PA 17540
877-897-7020

Remember it is very important to install the guards properly with the correct quantities. Do not only put snow guards over doorways, walkways, etc.

www.levisbuildingcomponents.com