

# SNOW DEFENDER®

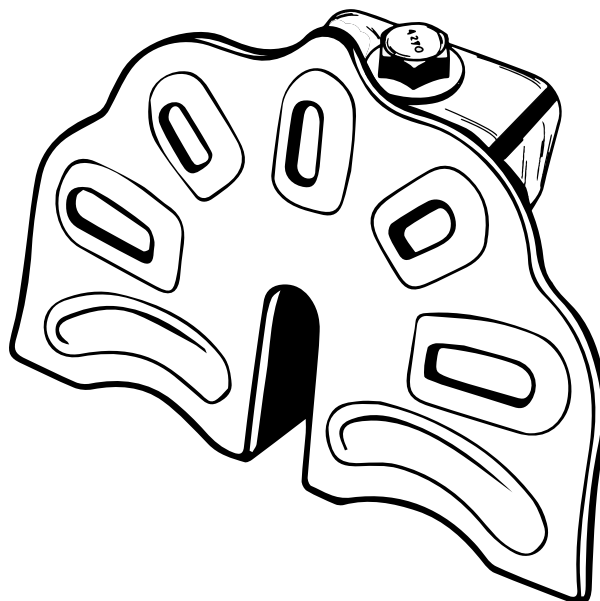
# 85RF DECO™

## Installation Instructions

The Snow Defender® 85RF DECO™ is designed to fit vertical-folded seam profiles for S-5!® clamps (sold separately). It is available in many different powder coated colors.

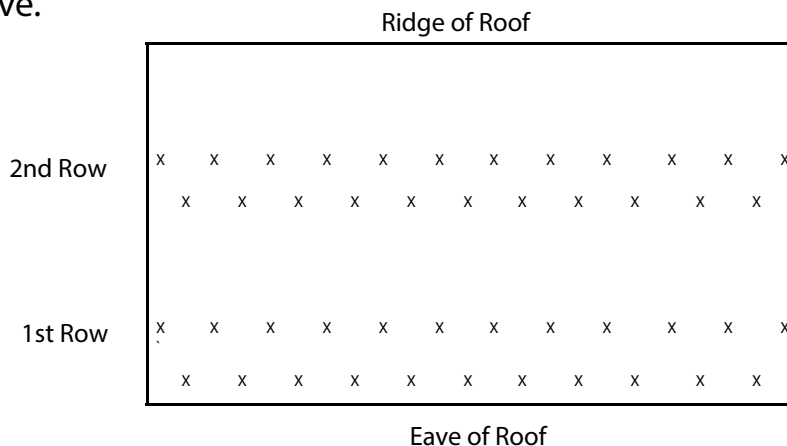
Step 1: Fasten clamp per the clamp manufacturer instructions for proper torque. It is recommended to install the guards in a staggered pattern. (Levi's Building Components® is not responsible for any clamp failures).

Step 2: Fasten the 85RF DECO™ to the clamp using the clamp manufacturer's bolt. 85RF DECO™ is to be fastened using the hole in the clamp towards the ridge. Be sure to secure the bolt very tightly. The face plate is to be towards the eave.



Contact Levi's Inside Sales Department by calling (877)-897-7020 for additional placement information

Placement Example:



For warranty details visit [www.snow-defender.com](http://www.snow-defender.com)



400 Burkholder Drive  
Ephrata, PA 17522  
877-897-7020

Remember it is very important to install the guards properly with the correct quantities. Do not only put snow guards over doorways, walkways, etc.

[www.levisbuildingcomponents.com](http://www.levisbuildingcomponents.com)